

# PRO-10G

## User Manual

Thank you very much for your PRO-10G purchase.  
Please read this user manual carefully before using in order to understand all functions and use properly. Be sure to keep this user manual in secure possession for future reference

Name of each part & Composition of the product



<PRO-10G MAIN BODY>



Tel. Line Adapter



Headphone



9V  
Drycell

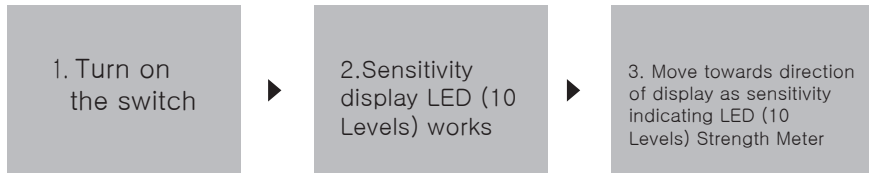
## Name of Each Part

1. Headphone: Jack for connecting to Headphone
2. Power Switch
3. Speaker out: It is used when White Noise sound is put out to external speakers (can be purchased separately)
4. Tel out: Jack for connecting to the phone
5. Tel in: Jack for connecting to the telephone line
6. Horizontal Bar Graph Display: RF Signal Strength Meter
7. RF warning: Light is ON when the wireless signal is transmitting
8. TEL warning: Light is ON when the phone is being wiretapped
9. Homing switch: The Homing switch functions to decrease sensitivity allowing user to find an accurate location of any wireless listening or transmitting device within range.
10. RF alarm: Light is ON when RF Signal Mode is operating
11. Noise: Light is ON when Noise Generator is operating
12. Telephone: Light is ON when Telephone Feature is operating
13. Speaker: Light is ON when the built-in speakers work
14. Speaker mode

# 1. For Detecting all "wireless transmitting devices" &/or "wireless transmitting spy cameras" within detection range

## How to operate

1. Silence Detection: can detect the wireless wiretaps and wireless cameras by using only LED sensitive display



- ① If sensitivity becomes level 10, Wireless Tapping Device may be indicated and confirmed nearby.
- ② Note, wireless camera may be around that area. Search area with naked eye and then check whether there is pin hole lens or not. (Wireless spy camera tapping device)

- ③ The Homing switch functions to decrease sensitivity allowing user to easily find an accurate location of any wireless transmitting listening or recording device.

### Usage

- a. Press once: reduces sensitivity---allowing for more accurate sweep and enables to find an accurate location of any wireless
- b. transmitting listening or wireless camera device.

To return to Normal Mode: Press once again and this returns device to original default state of sensitivity.

④

NOTE: There is a case where the sensitivity indication LED of PRO-10G is still turned on even after call of the mobile phone is completed. This is caused by communication between the mobile phone and the communication company for 0~20 seconds. The PRO-10G is so sensitive that the display window can be displayed at a very short moment of electronic wave.

NOTE: Pro-MAX 10G Detects all of the following kinds of bugging devices:

- ALL GSM Bugs including Baby-Monitors/GSM Alarm/GSM Bugs
- ALL Cellular GSM/GPRS/EDGE/3G/4G Video Cameras & Listening Bugs
- ALL Transmitting Spy Phones
- ALL GPS Trackers while Transmitting
- ALL Bluetooth Active Bugging Devices
- ALL Spy Phones with Active Bluetooth/Wi-Fi
- ALL Wireless Transmitting Video Cameras up to 5.8 Ghz

PRO-10G has Detection range up to 35-40 feet depending on Power of Transmitting source

## 2. Detection using RF alarm feature

- It works exactly as #1 Silence Detection, though Speaker now Alerts
- When getting closer to wireless signal the sound beeps (faster). When it is very close to the wiretaps the "beep" sound is heard.



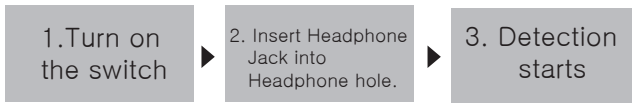
The Homing switch functions to decrease detector sensitivity and helps find an accurate location of a wireless transmitting device.

Usage

- a. Pressing Once reduces sensitivity--- enables user to find an accurate location of any wireless transmitting device.
- b. Press once again and this --returns unit to original state of sensitivity.

### 3. Detection using Headphone

- It works together with #1 Silence Detection. It detects while listening with headphone, As it is closer to wiretaps the sound varies (faster). When it is very close to it the "beep" sound is heard.



The Homing switch functions to decrease detector sensitivity and helps find an accurate location of a wireless transmitting device.

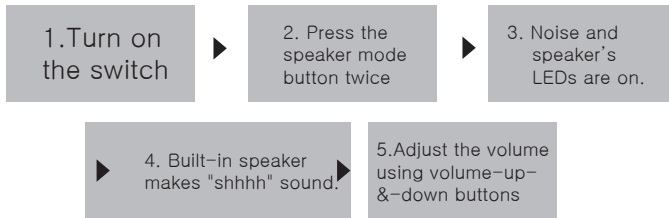
Usage

- a. Pressing Once reduces sensitivity--- enables user to find an accurate location of any wireless transmitting device.
- b. Press once again and this --returns unit to original state of sensitivity.

## 4. Noise Function

Audio Tapping prevention mode

Used for preventing wire/wireless tapping, laser tapping, recording by voice recorder, recording by tape recorder, tapping by parabolic reflector, tapping by hidden tapping device in wall.



Adjust noise volume properly not to be harsh to ears so much. However, if the volume is louder, tapping prevention is better and more efficient.

When using for laser tapping prevention, place the device close to window and direct the speaker face to window.

During your conversation, please speak with lower volume than noise feature for Maximum protection.

If you want a little louder noise, external speakers could be connected to the speaker-out on the side of the product by plugging in the external speaker's Jack. External speaker can be purchased at any electronic store.



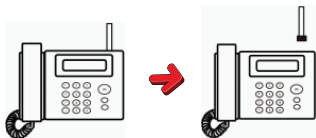
## 5. Telephone tapping detection and prevention

Use for detecting and preventing wire telephone tapping device on cable and illegally bridged.

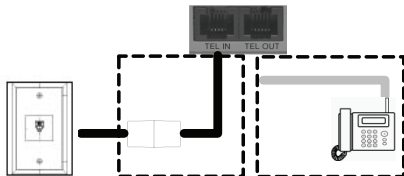
1. Check and prepare 2 types of telephone cables and cable connector bundled together.



2. Disconnect the telephone cable from the telephone you want to search.



3. Open the rubber cover on the side of PRO-10G.



Connect the disconnected telephone cable in above step”2.” to cable connector as shown in the picture.

Connect the other end of the black cable which is connector to the TEL IN terminal on the PRO-10G as shown in the picture.

Connect one end of the white cable to TEL OUT terminal on the PRO-10G and the other end to inlet terminal of the telephone that you disconnected in above step “2” in order to search.

In this case, if a person named ‘C’, unlawfully tries to listen to a telephone communication between PRO-10G holder and a person named ‘B’, when the PRO-10G holder is having a telephone communication with the person ‘B’, the telephone of PRO-10G holder is STOPPED and cannot transmit or receive calls while phone line is actively tapped by person named ‘C’, and the person ‘B’ and the person ‘C’ will hear a warning sound of “zzzz”. At this time, the warning LED is lighted on or blinks. No calls can be tapped under this scenario.

## Specification

### PRO-10G

Radio Frequency

Gain : 20dB

Response : 10Mhz~10Ghz

Display:

LED supported by 10 levels

Main power supply :

6LF22 Alkaline battery

Manufacture : DSE Company

Made in Korea

## Cautions

Please certainly read The “User Manual” before using the product.



The product is designed in due consideration for stability. However, improper use of the product can lead to accident due to fire and electric shock, etc. Therefore, please read the "User Manual" sufficiently before using the product in order to prevent such accident beforehand. Also, when handling product box, user manual and parts, please be careful to avoid hand injury.

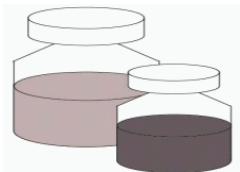
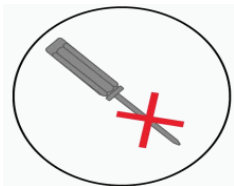
**Manufacturer assumes no liability if instructions are not followed**

In the case of product trouble



1. If there is abnormal smell and/or smoke ;
  - a. Remove battery immediately.
  - b. Contact our Customer Service Center immediately.
2. Use only dedicated devices.

## Storage and handling of product



1. Do not throw into fire or heat the product and do not use or store around heating devices like electric heater. If there is battery inside, it may be burst and cause fire, injury and disorder. Also when it was wetted by accident, do not dry with heating devices like stove, heater, dryer, microwave oven, etc. Such heavier may cause serious disorder on product.
2. Disassembly and alteration is strictly forbidden. Never disassemble, alter or repair by yourself arbitrarily.
3. Remove battery from the product and store separately if you do not use it for a long time.
4. Do not insert battery cover into mouth. It may cause injury.
5. Do not apply strong shock on product. It may cause damage on product or injury on you.
6. Do not keep in trousers pocket, may cause damage on product due to strong stress and lead to injury on you.
7. Be careful not squeeze your finger between battery cover and case, may cause injury.
8. Do not clean the product with organic solvents like thinner, benzene, alcohol, etc. In the case that main body just clean with dry clothes. If you clean with such organic solvents, it may cause damage on plastic and discoloration on front part.
9. Assure to put in antenna when carrying or storing the product. If you carry the product in the bag with the antenna unfolding, it may cause disorder. Do not bend or curve antenna by force.
10. Do not touch the body of the device when there is lightning and thunder. It may cause electric shock by lightning.



11. Keep main body away from wetting by liquid and contamination with foreign material. Also be careful not to throw into water and to avoid touch with wet hands. If the inside of product is contaminated with water or foreign material, switch off, remove battery and then contact our Customer Service Department.  
If you continue to use during the product is wet and /or contaminated, may cause serious troubles like fire, electric shock, and/or disorder.
12. Store in the place away from children and petty animal to touch. If the device may drop to cause injury and /or children may be injured by the antenna on eye or ear by mistake during touching it.